

# CamSight® LS



## Ultra Low SWaP Thermal Camera

- Ultra low Size, Weight and Power (SWaP)
- Uncooled LYNRED ATTO sensor:  
640 x 480 @12µm pitch
- Very low latency
- Patented shutterless technology



# CAMSIGHT® LS

## ULTRA LOW SWAP OEM CAMERA

CamSight® LS is an Original Equipment Manufacturer (OEM) digital core camera developed by Bertin Photonics.

CamSight® LS features an uncooled ATTO infrared sensor by LYNRED, designed for challenging applications.

CamSight® LS is the smallest OEM VGA camera available on the market. To comply with users requirements, the camera has been designed to be easily integrated within complex optronic systems, such as rifle sights,

ground or aerial drones and every equipment requiring ultra low SWaP. Lightweight, ultra-compact and very low-consuming, CamSight® LS can be implemented in very constrained environments.

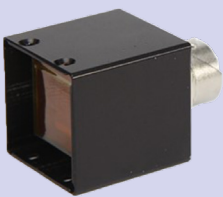
Indeed, thanks to its ergonomic design and high-performance, the camera fulfills most night and day surveillance, observation and infantry missions.

CamSight® LS also exists in a casing version dedicated to end-users.

### Uncooled IR ATTO bolometer technology

CamSight® LS is equipped with LYNRED's sensor ATTO 640x480 with a 12µm pitch, offering the following advantages:

- Thin pitch camera allowing lens size decrease
- Very low latency
- Freeze-free image delivery for an unmatched fluidity
- Shutterless, no requirements for maintenance and calibration in operation



Core camera



Core camera with 13.6mm lens (32° HFoV)

Image captured by CamSight® LS with a 13.6mm



### Technical features

<b>Sensor</b>	ATTO (by LYNRED) 640 x 480 @12µm pitch
<b>Bandwith</b>	LWIR (8-12µm)
<b>HFoV (°)</b>	112 / 86 / 61 / 50 / 32 / 18 / 13 (More on demand)
<b>NETD</b>	< 50mK @ F# 1/1.0
<b>Consumption</b>	< 0.75 W*
<b>Video outputs</b>	SD-SDI / PAL / MIPI CSI2 / GigE Vision
<b>Time to image</b>	< 1s
<b>Dimensions</b>	22 x 22 x 15.5mm
<b>Weight</b>	9g

\*Parallel bus 25°C & 25 Hz